



(Gap/White Horse/South Hermitage Area)

PUBLIC AUCTION



**137.2-ACRE FARM * 99-AC. TILLABLE * 38.2-AC. WOODED
3-BDRM FARMHOUSE * BANK BARN * TOBACCO & EQUIPMENT BARN
A/C TRACTORS * FARM EQUIP * GUNS * RARE ANTIQUES & PRIMITIVES
SAT., JAN. 17, 2026 @ 9:00 AM /Real Estate @ NOON**



RIFLES & SHOTGUNS



3-BDRM STONE FARMHOUSE



BANK BARN & OUTBUILDINGS

Located at: 380 Kauffroth Rd. Gap. PA 17527 Salisbury Twp. Lancaster Co.

Directions: From E. Earl Rt. 897 S. to left on Gault Rd. 5-mi. to right on Kauffroth OR from White Horse Rt. 340 take Cambridge Rd. E. to left on Kauffroth to farm.

Real Estate: consists of a valuable 137.2-acre farm featuring 99-acres level to gently rolling highly productive tillable land & 38.2-acre wooded; 3-bdrm 2-story stone farmhouse, bank barn, equip. bldg & smaller outbuildings. Farmhouse (1820) has 2,040 sq. ft. (needs TLC) includes a kitchen/dining room; living room; parlor; 3-bedrooms & full bath; basement w/shop area & canning storage; 1,764 sq. ft. bank barn w/steer stable; hog barn; 2-bay garage; springhouse; old 3-story poultry barn; equipment bldg; tobacco/corn barn, plus sheds. On-site septic, spring water, electric, zoned AG, Clean & Green, NOT enrolled in farmland trust, possible subdivide, annual taxes: \$5,340.

OPEN HOUSE DATES: SAT. DEC. 27 & JAN. 3 FROM 1-3 PM for info or private showing call/text Mike @ (717) 371-3333.

TERMS: \$300,000 down payment day of sale, balance on or before 60-days. **Attorney:** Neil Yahn (717) 533-3280.

NOTE: Valuable eastern Lancaster Co. farm w/highly productive ground. Historic farm buildings & house need some TLC. First time offered at auction in over 100+years! Lots of old & rare antiques offered @ 9 AM followed by guns & equipment.

FOR PHOTOS & DETAILS VISIT www.martinandrutt.com

9-AM: Antiques & Personal Items: 2-#12 crocks; #10 crock; 25-old crocks & jugs; H P Hawthorn, PA crock; old silver mesh purse (nice); Moseman PB tin; 12-wire egg baskets; 2-Acme egg scales; beetle boot jack; (3) 10-hole chicken nest boxes; wooden chicken crates; chicken feeders; Brunnerville cast iron hog troughs; cast iron cherry stoner; early farm tools; 25-apple crates; 100's of canning jars, old green jars; old books; early lithographs; antique wooden furniture; sad irons & trivets; cast iron pans; redware pie plates; kitchen primitives; 3-apple butter kettles; many more rare finds in this 200-year old house!

Guns & Banjos: Winchester mod 67 .22 bolt-action rifle; Winchester mod 69A .22 bolt-action rifle w/clip; Iver Johnson .12 gauge single shot; Savage 30.06 Win mod 120 series B rifle w/scope; Ithaca mod 900 .12-gauge w/etching (LIKE NEW); Fender banjo w/case; Old Kraftsman banjo; 25+ harmonicas (several rare).

Tractors & Farm Equipment: 1948 Allis Chalmers G w/cultivator; 2-Allis Chalmers WD's; Allis Chalmers D17 tractor; New Holland 315 Hayliner baler; Case #135 manure spreader; John Deere 506 brush mower; Ontario grain drill; 6' disc; NH 56 hay rake; IH 1-row corn picker; 32' bale elevator; 2-16' flat wagons; trailer wagon; 2-3-btm plows; Huskee & Husqvarna riding mowers; 3-Stihl chainsaws; farm gates; bale scale, lots scrap metal; plus much more.

Terms: Cash, PA check, credit cards w/3% fee; food stand; sale held under tent, bring a chair

**AUCTION BY: Martin & Rutt
Auctioneers, LLC AY2189-L
Michael J. Martin (717) 371-3333
John J. Rutt II (717) 587-8906
Cameron J. Rutt (717)-875-6032**



AUCTION FOR:
Plenary Guardian of Wilson Huyett

More info on other side



FENDER BANJO



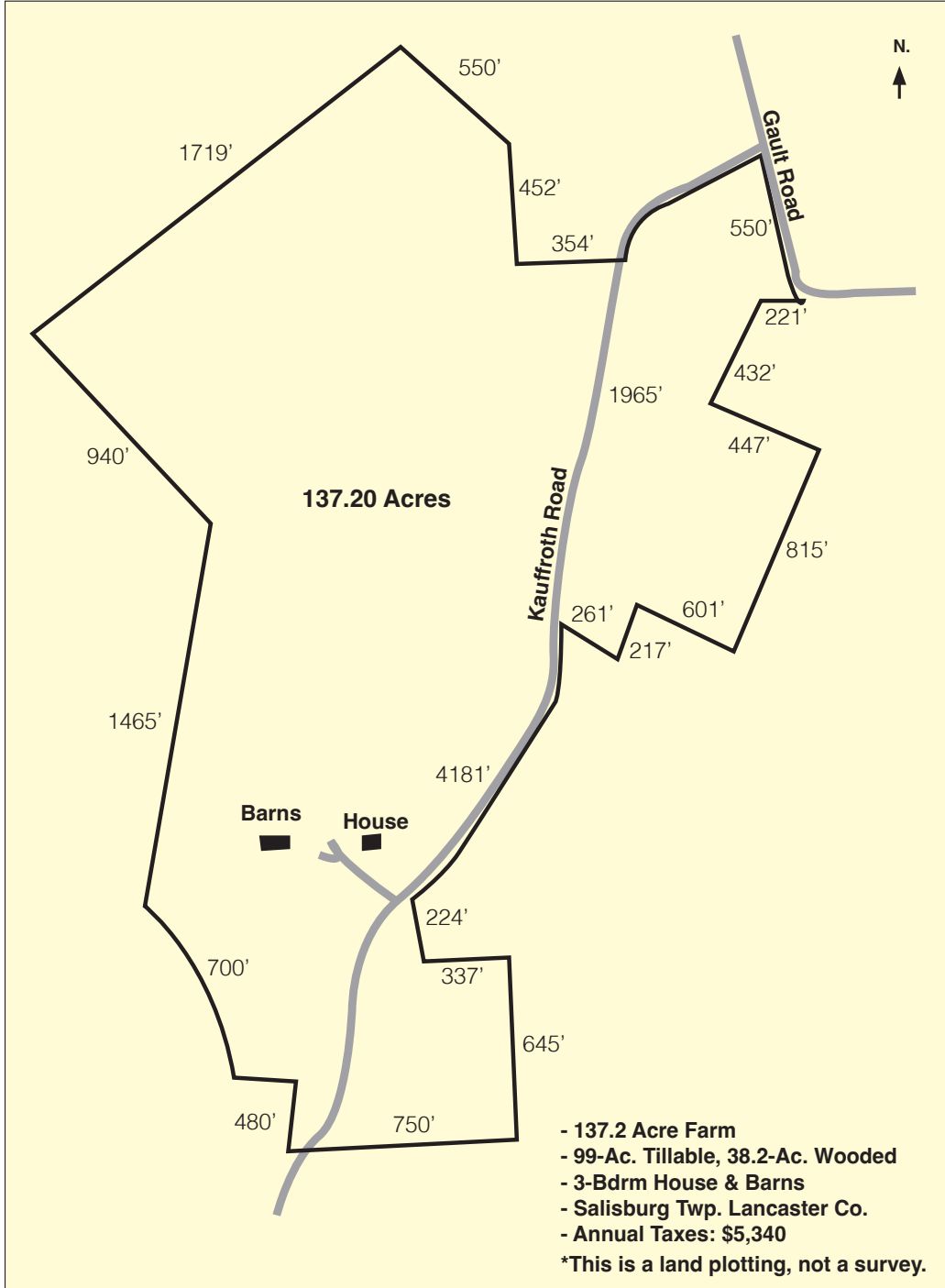
MOSEMAN PB TIN



H. P. CO. HAWTHORN PA.



#12 LARGE CROCK



VINTAGE SILVER MESH PURSE



ALLIS CHALMERS G



25+ HARMONICAS

AUCTION BY: Martin & Rutt
Auctioneers, LLC AY2189-L
Michael J. Martin (717) 371-3333
John J. Rutt II (717) 587-8906
Cameron J. Rutt (717)-875-6032



AUCTION FOR:
Plenary Guardian of Wilson Huyett

More info on other side