



(Gordonville Area)



PUBLIC AUCTION

5-BDRM 1.5-STORY HOME * 2-BAY SHOP/GARAGE & SHED * .39-AC. LOT
MECHANICS TOOLS * 6-TON AUTO LIFT * MOWERS * PERSONAL PROPERTY
SAT. JUNE 14, 2025 @ 9-AM/Real Estate @ 1-PM



1,596 SQ. FT. 1.5 STORY HOME



5-BDRM 1-BATH HOME * .39-AC. LOT



30'X33' 2-BAY SHOP/GARAGE

Located at 2940 Lincoln Hwy. E. Gordonville, Pa. E. Lampeter Twp. Lancaster Co.

Directions: From Paradise take Rt. 30 west 1-mile to property on left opposite Pine Hill Trailers.

REAL ESTATE: consists of a 1,596 sq. ft. 5-bedroom home, 30'x33' 2-bay garage/shop & 12'x28' utility barn located on a .39-acre lot. Main floor includes an Oak cabinetry kitchen w/SS fridge, DW & new gas range, pantry & sit-up bar; 10'x12' dining room; 12'x16' living room; BR#1) 10'x11' w/closet; BR#2) 10'x11' w/closet; full bath; BR#3 or laundry; upper level has 2-20'x16' bedrooms w/closets; unimproved basement w/gas water heater; water softener; public sewer & well; electric heat; new roof; aux. solar panel system; covered front porch; rear deck; insulated windows; annual taxes: \$3,232. **OUTBUILDINGS:** a 30'x33' 2-bay garage/shop and a 12'x28' utility barn w/garage door.

OPEN HOUSE: SAT. MAY 24 & 31 from 1-3 PM for info call/text auctioneer @ (717) 371-3333.

TERMS: 10% down day of sale, balance in 60-days. **Attorney:** Patrick Deibler (717) 354-7700.

NOTE: Great eastern Lancaster Co. location. Well kept home w/aux. solar panels; large detached shop/garage for the car buff; utility barn, large garden area borders Amish farmland.

For Complete Listing & Photos Visit www.martinandrutt.com

TOOLS, GARAGE & SHOP ITEMS: 6-ton hydraulic auto lift; Husky upright air compressor; 2-Craftsman stacking toolboxes on wheels; pedestal fan; numerous Craftsman socket & wrench sets; bench vise; 2-bench grinders; 1750 psi pressure washer; 16-speed drill press w/machinist vise; engine hoist; transmission stand; 2-floor jacks; retractable cords; air ratchets; hammer drills; screwdriver & drill bit sets; torque wrenches; gear pullers; spray paint gun; come-along; battery chargers; 26" MTD 8.5 hp snow blower; Craftsman 21hp lawn tractor w/snow blade; 6.5hp trim mower; wheelbarrow; leaf blowers; Lincoln welder; sledge hammers; hand truck; ladders; lots of hand tools!

PERSONAL PROPERTY: 20-Hess Trucks; 25-NASCAR toy cars; lots of NASCAR memorabilia; Coca-Cola adv. items include a nice diner clock; auto adv. signs; whitetail mount; washer & dryer; chest freezer; 2-double beds; chest; lots of kitchen & household items; plus much more unlisted!

Terms: cash, PA check, credit card w/3% fee. Good food onsite, sale held under tent, bring a chair.



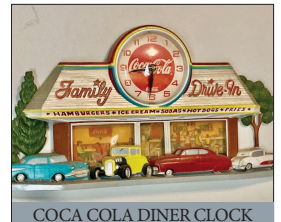
2-STACKING CRAFTSMAN TOOLBOXES



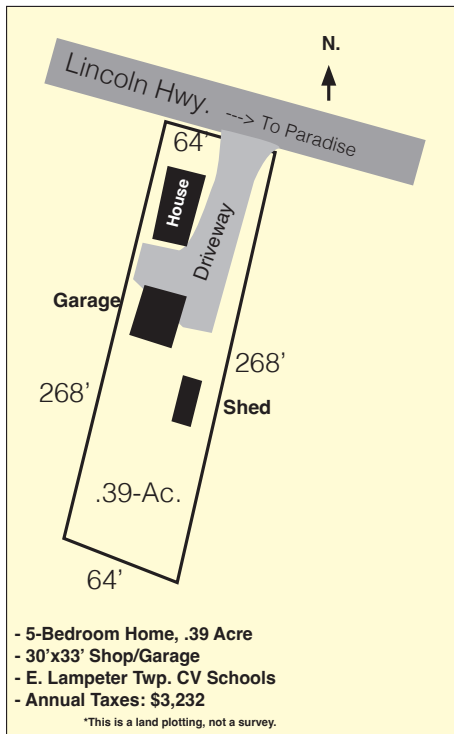
6-TON HYDRAULIC AUTO LIFT



LOTS OF CRAFTSMAN TOOLS



COCA COLA DINER CLOCK



AUCTION BY: Martin & Rutt
Auctioneers, LLC AY2189-L
Michael J. Martin (717) 371-3333
John J. Rutt II (717) 587-8906
Cameron Rutt



AUCTION FOR:
Ralph C. & Dorothy D. Huffer