



(U. Leacock Twp. /Leola Area)



PUBLIC AUCTION

3-BDRM 1-BATH 1.5-STORY BRICK HOME w/2-CAR GARAGE * .63-AC. LOT
2011 CHEVY PICKUP * JD MOWER * SILVER COINS * TOOLS * ETC.
SAT. AUGUST 16, 2025 @ 9-AM/Real Estate @ 1-PM



2011 CHEVY PICKUP TRUCK



3-BEDROOM RANCHER W/2-CAR GARAGE



2,468 SQ. FT. BRICK RANCHER * .63-AC. LOT

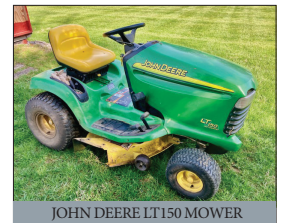
Located at: 26 Geist Rd. Lancaster, Pa. U. Leacock Twp. Lancaster Co.

Directions: From Leola follow Rt. 23 W. to left on Geist Rd. @ Lancaster Labs to home on right.

REAL ESTATE: consists of a 2,468 sq. ft. 3-bedroom (1954) 1-5 story brick home w/2-car garage & shed on a rural .63-acre lot. Main floor features a nice oak cabinetry kitchen w/range, microwave, DW & fridge; breakfast nook; laundry room w/sink; 14'x14' dining room; 20'x14' front living room; BR#1) 12'x12' w/closet; full bath; BR#2) 12'x12' w/closet; upper level includes BR#3 & storage area; basement w/oil furnace HW heat; central AC; wood stove; pool table included; 200 amp svc; well & public sewer; new roof 2019; covered front porch; alcove/breezeway; 2-car garage; annual taxes: \$4,674; 14'x10 garden shed; wide macadam driveway; nice mature shade.

OPEN HOUSE: SAT. JULY 26 & AUG. 2 from 1-3 PM for info call/text auctioneer @ (717) 371-3333.

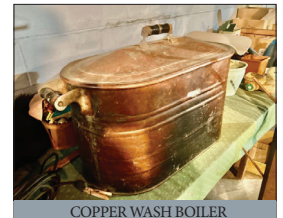
TERMS: 10% down day of sale, balance in 60-days. **Attorney:** Beiler Legal Svc. (717) 287-1688



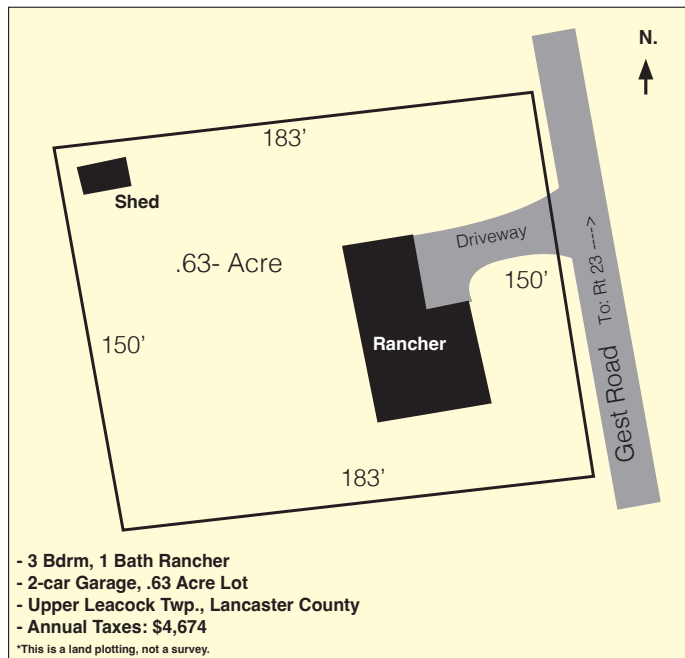
JOHN DEERE LT150 MOWER



STIHL CHAINSAW



COPPER WASH BOILER



NOTE: Charming solid brick 3-bedroom low maintenance move-in ready home, rural setting yet close to all conveniences. Large backyard offers fruit trees, raspberries, grape arbor & ample garden area.

SILVER COINS @ 9-AM: 40-Lots Silver dollars & halves, silver quarters, dimes, etc.

TRUCK: 2011 Chevy Silverado 271 4x4 Crew Cab, seats 6, blue/gray, V8, 84k miles, great running truck.

TOOLS, LAWN & GARDEN: John Deere LT150 lawn tractor; Troy Bilt Pony tiller; Huskee snow blower (nice); Stihl chainsaw (nice); Stihl trimmer; radial arm saw; 12" wood planer; 10" table saw; wood lathe; air compressor; 2-leaf carts; 5" bench vise; bench grinder; circular saw; ladders; socket & wrench sets; lots of hand & power tools; live trap; apple crates; express wagon; potting rack; water trough; picnic table; hot bed; concrete planters; patio set; meat smoker; garden hoses; pressure washer; etc.

PERSONAL PROPERTY: washer & dryer; chest freezer; quilts & blankets; blanket chest; sewing supplies; 2-wash stands; Empire chest; hay cradle; beam scale; old lunch box; cream pail; ash sifter; pitcher pump; saw board; wash board; cast iron pans; 2-man saw; copper wash boiler; oak side by side; ext. table & hutch; oak desk; old oak dresser; painted chairs; chip carved dresser; 3-pc BR suite; 2-painted milk cans; crocks & jugs; SS stock pots; roasters; old advertising calendars; Whitetail mounts; black bear mount & rug; 4-caribou racks; 13-turkey calls; hunting items; 6-gun case; plus much more.

Terms: Cash, PA check or credit card w/3% fee; food stand by GSFR aux. sale held under tent bring a chair. **FOR PHOTOS & DETAILED LISTING VISIT www.martinandrutt.com**

AUCTION BY: Martin & Rutt
 Auctioneers, LLC AY2189-L
 Michael J. Martin (717) 371-3333
 John J. Rutt II (717) 587-8906
 Cameron Rutt



AUCTION FOR:
 the Clarence M. Martin estate