

(Strasburg/Quarryville Area)

# PUBLIC AUCTION of REAL ESTATE

1.24-ACRES \* LARGE DETACHED WAREHOUSE or GARAGE  
REMODELED 4-BR FARMHOUSE \* 2.5-STORY HORSE BARN



**THURSDAY JUNE 13, 2024 @ 6:30PM**



2.5-STORY \* 4-BR'S



HEATED WAREHOUSE & DOCK



2-STORY HORSE BARN

LOCATED AT: 1116 May Post Office Rd, Quarryville PA 17566 \* Eden Twp.

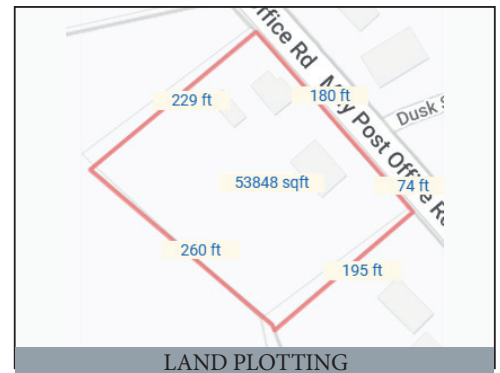
**DIRECTIONS:** From Strasburg travel south on May Post Office Rd. and the property is approximately 4.3 miles to house on right.

**HOUSE DETAILS:** An historic 2.5 story farmhouse w/ 2,036 sq. feet and 4 bedrooms on a 1.24-acre level lot. House has approx. 2,036 sq. ft.; main level includes a 21'x 16.5' eat-in kitchen w/ brand new cabinetry, brand new S.S. appliances & propane stove, quartz countertops, island w/ cutting board top, painted brick fireplace w/ mantle; 13'x 11' main level primary bedroom; directly beside a full bathroom w/ shower; 20'x 9' formal family room; 7'x 15.5' office w/ built-in bookshelf; 11.5'x 6.5' laundry w/ sink & closet; inviting small side porch & small front covered porch. Second level 3-bedrooms (1 is walk-thru); full bathroom w/ tub shower. Third level is finished as a fourth bedroom. House has newer propane furnace (1,000 gal. tank serves house & warehouse); on-site septic; on-site well w/ UV-light; newer efficient water heater & pressure tank; good roof; Solanco School District; taxes only \$3,112.

**WAREHOUSE & BARN:** A very nice L-Shaped warehouse 50'x 44' x 30' w/ 10.5' ceilings w/ steel sheeting, (2) 8'x 9' overhead doors, concrete floor, concrete block bottom 20" of the wall (the rest is framed), insulated w/ propane warm air heater, concrete truck height loading dock (forklift into building thru a overhead door), brand new steel roof 5-24. A 2-story 28'x 18' framed horse barn w/ 12' lean-to addition, dirt floor & second level storage, large sliding door access. Cute playhouse looks like an old school house. Wooded area in back of property, plenty of room for pasture. Backs up to farmland, full of potential.



BRAND NEW KITCHEN



LAND PLOTTING

**OPEN HOUSE: Saturday June 1 & 8, from 1-3 PM. Call/Text Auctioneer (717) 587-8906**

BRIEF TERMS: 10% down payment the day of auction, balance in 45 days or before. This auction is being held under the terms provided by attorney Glick, Goodley, Diebler & Fanning (717) 354-7700.

Please visit our website at [www.martinandrutt.com](http://www.martinandrutt.com) or Facebook or Instagram



Scan to view

AUCTION BY: Martin & Rutt  
Auctioneers, LLC AY2189-L  
John J. Rutt II (717) 587-8906  
Michael J. Martin (717) 371-3333  
Cameron Rutt



AUCTION FOR:  
KORE HOME SOLUTIONS