



(Earl Twp/New Holland Area)

# PUBLIC AUCTION



**3-BDRM 2-BATH BRICK RANCHER w/2-CAR GARAGE \* .34-AC. LOT**  
**JD STX38 MOWER \* GENERATOR \* ANTIQUES & PERSONAL PROPERTY**  
**SATURDAY, SEPTEMBER 10, 2022 @ 9-AM/Real Estate @ NOON**



6'x20' COVERED FRONT PORCH



1,487 SQ. FT. RANCHER W/2-CAR GARAGE



3-BDRM 2-BATH RANCHER \* .34-AC. LOT

**Located at: 606 S. Kinzer Ave. New Holland, Pa. Earl Twp. Lancaster Co.**

**DIRECTIONS:** From Main St. (Rt.23) New Holland take S. Kinzer Ave. 1.5 mi. to home on right.

**REAL ESTATE:** consists of a custom built (1968) one-owner 1,487 sq. ft. brick rancher w/2-car garage on a .34-ac. country lot. Main floor features a custom birch cabinetry kitchen w/sit-up bar, DW & range; 12'x14' dining area w/ built-in corner cupboard; 18'x14' living room w/bay window; 6'x20' covered front porch; full bath; laundry w/mop sink & access to side porch; 3-bedrooms w/ closets; main bath w/bidet commode. 935 sq. ft. basement w/Bilco egress door; brick fireplace; utility room; central AC/oil furnace; water treatment system; central vac; 200 amp svc; on-site well & septic; annual taxes: \$3,215..

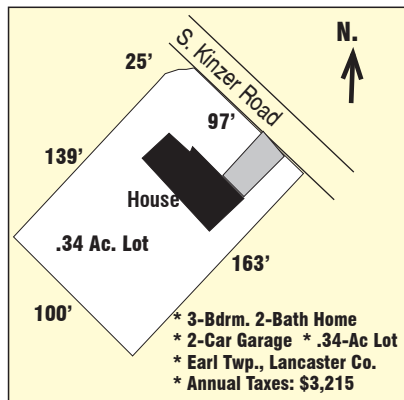
**OPEN HOUSE: Sat. Aug. 20 & 27 from 1-3 PM for info call/text auctioneer @ (717) 371-3333.**

**TERMS:** 10% down day of sale, balance on or before 60-days. Attorney: Charles Benner (717) 656-4201

**Note:** Beautiful well-maintained brick rancher in the Mill Creek valley just south of New Holland. Property is in move-in ready condition, peaceful rural setting w/pleasant farmland views!

**For photos & listing visit [www.martinandrutt.com](http://www.martinandrutt.com)**

**Lawn, Garden & Tools:** John Deere STX38 Hydro 42" riding mower; Generac 5500 generator (like new); Snapper 21" SP mower; 14" band saw; 6" jointer; 16' aluminum ext ladder; 2-step ladders; 2-leaf carts; lawn sweeper; tool boxes; lots of hand & power tools; Wiard walking plow; lawn roller; Radio Flyer wagon; battery charger; lots of rakes, shovel, brooms, fishing tackle; golf clubs; tobacco spear; oyster knives; porch rockers; lawn chairs; live edge White Oak slab lumber; plus much more!



**Antiques & Personal Property:** Antique & modern quilts & tops; chenille spread & hand braided rugs; brass kettle; rat-tail forks & ladles; grain cradle; hay needle; painted milk can; 3-marble-top stands; 2-cane seat chairs; cedar chest; 2-old blanket chests; needlepoint cast iron stool; Victorian stool; Tammy doll; doll bed; ext. table & 6-chairs; pressed back rocker; 3-pc dbl bed suite; 2-clothe trees; 6-gun cabinet; #3 crock; blue, yellow & purple Carnival glass; painted child's chair; china & dinnerware; flatware set; kitchen & cookware items; Nylint Jeep & trailer (nice); Tonka trucks; JD tractors & farm toys; 3-ABC Groff Ertl trucks; JD door plaque; JD pocket knives, toys, advertising, literature & service manuals; Sperry/NH memorabilia; 3-NH ambulance Ertl banks; plus much more.

**Terms:** Cash, PA check, credit card w/3% fee, good food by Black Diamond catering; sale held under tent, please bring a chair.



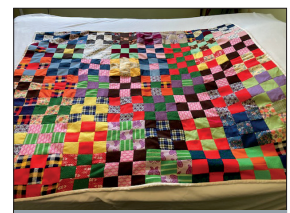
JOHN DEERE STX38 MOWER



GENERAC 5500 GENERATOR



NYLINT TRUCKS & FARM TOYS



VINTAGE & MODERN QUILTS

**AUCTION BY:**  
**MARTIN & RUTT AUCTIONEERS**  
 AY2189  
 Michael J. Martin (717) 371-3333  
 John J Rutt II (717) 587-8906



**AUCTION FOR:**  
 the **MARGARET E. WYBLE** estate  
 (Bob (717) 341-3389)