



(S. New Holland Area)

PUBLIC AUCTION



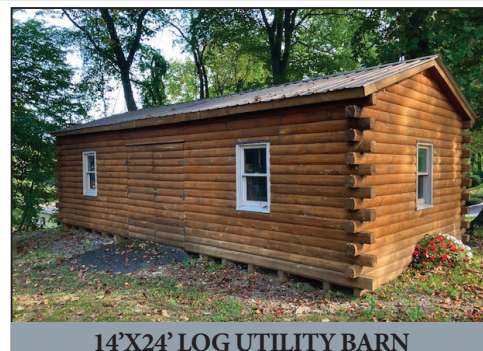
4-BDRM 4-BATH CUSTOM CAPE COD w/OVERSIZED 2-CAR GARAGE * 3.6-AC.
MASTER SUITE w/WIC, FIREPLACE, PRIVATE BATH, LIBRARY & DECK
CUSTOM CHERRY KITCHEN * FINISHED DAYLIGHT BASEMENT
FINE ANTIQUES & FURNITURE * GUNS * TOOLS * LAWN & GARDEN ITEMS
SATURDAY, NOVEMBER 20, 2021 @ 8-AM/Real Estate @ 2-PM



PRIVATE DECK & PATIO



3.6 ACRES! * 4-BDRM CAPE COD



14'X24' LOG UTILITY BARN

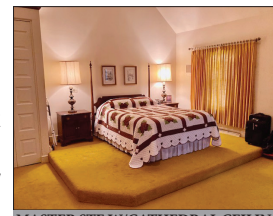
Located at 720 Stonecrest Rd. New Holland, Pa. Earl Twp. Lancaster Co.

DIRECTIONS: From New Holland Rt. 23 Main St. take S. Custer Ave to right on Maple Grove Rd to left on Stonecrest Rd to home on right.

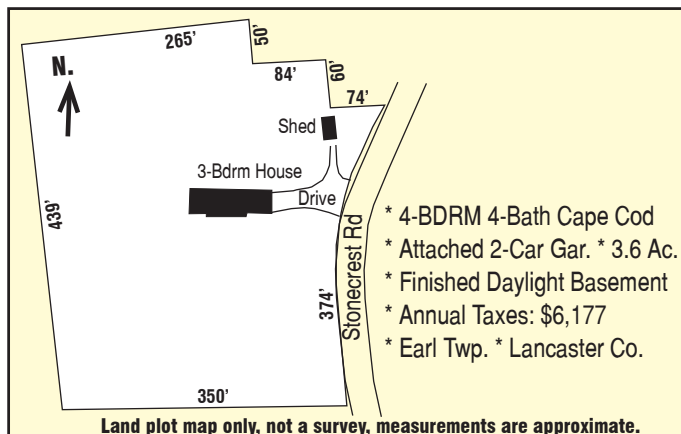
REAL ESTATE: consists of a 2,923 sq. ft. custom 4-bdrm brick Cape Cod home w/oversized 2-car garage on a 3.6-ac. rural tract. Main floor features a stunning open foyer w/spiral staircase; a 14'x14' formal dining room; a 14'x20' formal living room; an outstanding Rutt custom raised panel cherry cabinetry kitchen w/pantry, center island, desk, double wall oven, glass-top stove & grill; 12'x12' dining area w/bay window open to family room w/brick fireplace & access to deck; mud room/laundry; full bath; master suite w/cathedral ceiling, WIC or study, fireplace w/walnut trim; access to deck; private bath w/double marble vanities; staircase to library area; upper level includes 3-bedrooms w/closets; full bath; cedar WIC; attic storage; finished 2,198 sq. ft. daylight basement features a 2nd kitchen; full bath; large open family room w/brick hearth for soapstone woodstove; access to rear patio; cold cellar; utility room w/central AC/gas heat furnace; central vac; 200 amp svc; on-site well & public sewer; 1000 gallon LP tank; annual taxes: \$6,177. **Outbuilding:** a 14'x24' log utility garden shed; wide macadam drive & parking area.



CUSTOM RUTT CHERRY KITCHEN



MASTER STE W/CATHEDRAL CEILING



Land plot map only, not a survey, measurements are approximate.

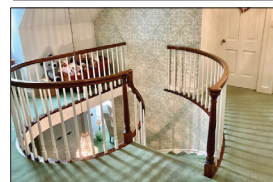
OPEN HOUSE: SAT, OCT. 30 & NOV 6 from 1-3 PM for info call/text auctioneer @ (717) 371-3333.

TERMS: 10% down day of sale, balance on or before 60-days. Attorney: Kling & Deibler (717) 354-7700

NOTE: Outstanding rural New Holland property; custom home offers numerous valuable amenities throughout w/great attention to detail; tasteful décor; southern exposure; truly a "must see" property!

For Photos & Full Listing Visit
www.martinandrutt.com

*** BROKER PARTICIPATION INVITED ***
CALL AUCTIONEER (717) 371-3333



ELEGANT FOYER
W/CURVED STAIRCASE



BASEMENT W/SOAPSTONE
WOODSTOVE

AUCTION BY:
MARTIN & RUTT AUCTIONEERS
AY2189
Michael J. Martin (717) 371-3333
John J. Rutt II (717) 587-8906



AUCTION FOR:
Aaron S. & Janet L. Kurtz
Personal Property on Reverse Side





(S. New Holland Area)

PUBLIC AUCTION



**4-BDRM 4-BATH CUSTOM CAPE COD w/OVERSIZED 2-CAR GARAGE * 3.6-AC.
 MASTER SUITE w/WIC, FIREPLACE, PRIVATE BATH, LIBRARY & DECK
 CUSTOM CHERRY KITCHEN * FINISHED DAYLIGHT BASEMENT
 FINE ANTIQUES & FURNITURE * GUNS * TOOLS * LAWN & GARDEN ITEMS
 SATURDAY, NOVEMBER 20, 2021 @ 8-AM/Real Estate @ 2-PM**



KURTZ TONGUE SUPPORT (1905-22)



ANTIQUE DOUGH BOX W/LID



12-GA & 30.06 GUNS



MALLARD DUCK DECOYS



EGG & POSTAL SCALES

Fine Antiques & Personal Property: W. Berthard tall case clock; 24-pane walnut china cupboard; jelly cupboard; 2-Regulator wall clocks; Lg. copper kettle; East-lake hall rack w/mirror; carved library table; 6' wooden settee; dovetailed dough box w/lid; mahogany cradles; Shaker table w/drawer; washstand w/towel bars; beautiful cherry bedroom furniture; 3-single & 1-double bed; antique oak wall desk; antique ladies writing desk; 3-dining tables; numerous dining chairs; Everett studio piano; organ; 4-drawer oak chest; 2-empire chests; oak kitchen table w/bakers drawer; drop-leaf cherry table w/drawer; "FAVORITE MFG" lighted sign; chest freezer; SS fridge; gas grill; washer & dryer; crazy patch comforter & pillows; quilts; 2-butter churns; blue decorated crocks; collectible glassware: flow-blue, blue & amber Carnival water sets, Adams plates & bowls; Bavarian & RS Prussia soft paste china, cranberry, copper luster; copper teapot & tea sets; coffee grinder; tin chicken bank; stereoscope w/cards; wooden dry measures; chickens & rabbit on nests; spinning wheel; wooden fork; wooden butter mold; oil lamp collection; vintage bird cage; pitcher & bowl sets; Cream Top dairy box; milk & cream cans; cigar boxes; tin oil lamps; match safe; old oilers; egg, postage & brass spring scales; opera glasses; cherry stoner; RR lantern; cast metal car; toy truck banks; Winross trucks; Barlow pocket knives; sheep bell; cast iron pans & troughs; meat hooks; rat-tailed meat forks & ladles; corn dryers; HUGE book collection-40+ boxes; antique "KEYSTONE TONGUE SUPPORT by JS Kurtz, Ephrata, Pa."; plus much more!

1-PM: Guns: Ithaca 12-ga pump mod #51 magnum featherweight; Remington 30.06 Gamemaster 760 pump w/Leupold 3x9 scope; re-curve bow w/arrows, archery supplies, ground blind; gun case for 10-guns w/ammo storage; game mounts-whitetail, caribou, etc.; Mallard duck decoys; misc. hunting items.

8-AM: Tools, Lawn & Garden: 212 JD lawn tractor; NH lawn tractor; JD pedal tractor; bikes; ladders; reel mower; backpack sprayer; Stihl blower & chainsaw; trimmers; bench vise; lawn chairs; jumper cables; ext cords; misc. hand & power tools; tool boxes; rakes, shovels, bag cart; saw bucks; gas cans; etc.

Terms: Cash, PA check or credit card w/3% fee; sale held under tents bring a chair; food by BBFR aux. Selling w/2-auctioneers throughout the day! Antique furniture sells @ NOON.

**For Photos & Full Listing Visit
www.martinandrutt.com**



"FAVORITE MFG" LIGHTED SIGN



ANTIQUE LADIES WRITING DESK



CAST IRON TROUGHS & PANS



VALUABLE COLLECTIBLE GLASSWARE

AUCTION BY:
MARTIN & RUTT AUCTIONEERS
 AY2189
 Michael J. Martin (717) 371-3333
 John J. Rutt II (717) 587-8906



AUCTION FOR:
Aaron S. & Janet L. Kurtz