



(Leola/Oregon Pike Area)



PUBLIC AUCTION

2-BDRM BRICK RANCHER w/2-CAR GARAGE * .47-AC. LOT
BEAUTIFUL RAISED PANEL CUSTOM KITCHEN * DAYLIGHT BASEMENT
ANTIQUES * FARM TOYS & METAL SIGNS * FURNITURE * TOOLS
SATURDAY, APRIL 10, 2021 @ 9-AM/Real Estate @ 1-PM



1,560 SQ. FT. BRICK RANCHER



2-BDRM RANCHER W/GARAGE

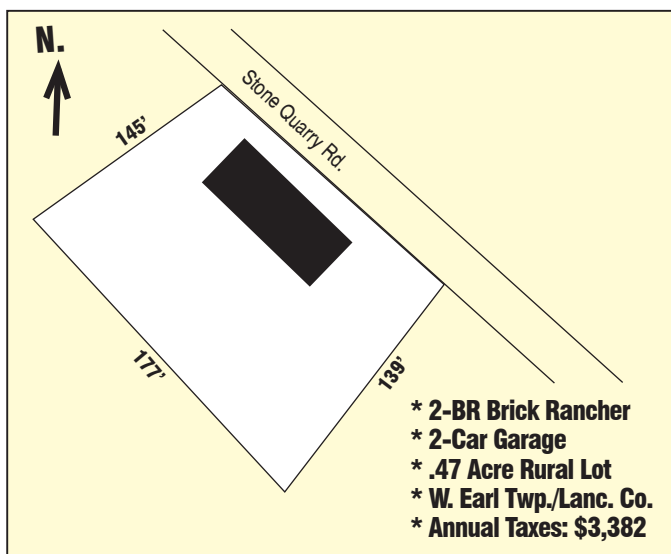


DAYLIGHT BASEMENT * .47-AC.

Located at 265 Stone Quarry Rd. Leola, Pa., W. Earl Twp., Lancaster Co.

DIRECTIONS: From Brownstown take Rt. 272 S. 1-mi. to left on Stone Quarry Rd. to home on right.

REAL ESTATE: consists of a 1,560 sq. ft. (1972) 2-bdrm brick rancher w/2-car garage on a rural .47-ac. lot. Main floor features a formal 12'x18' living room; office w/private entrance; laundry room; custom raised panel cherry kitchen w/built-in pantry & hutch, appliances included; 12'x12' dining room; full bath; 2-large bedrooms w/closets; attached 2-car garage; 1,500+ sq. ft. daylight basement w/canning storage & utility room, recent LP furnace/central AC; 500 gal. LP tank; on-site well & public sewer; annual taxes: \$3,382.



OPEN HOUSE: SAT. MARCH 20 & 27 from 1-3 PM
for info call/text auctioneer @ (717) 371-3333.

TERMS: 10% down day of sale, balance on or before 60-days.

Attorney: Kling & Deibler (717) 354-7700

Note: Property offers convenient one-floor living, desirable rural setting, spectacular custom kitchen w/many built-ins; reasonable taxes, CV schools; easy access to 272/222.

For photos & listing visit www.martinandrutt.com

Additional info on reverse side



CUSTOM KITCHEN



BUILT-IN PANTRY/DESK



1-OF-2 LARGE BEDROOMS



DINING/SITTING ROOM

AUCTION BY:
MARTIN & RUTT AUCTIONEERS
AY2189
Michael J. Martin (717) 371-3333
John J Rutt II (717) 587-8906



AUCTION FOR:
the David H. Good Estate
(Ed (717) 466-4993)
(Lewis (717) 371-2818)



(Leola/Oregon Pike Area)



PUBLIC AUCTION

**2-BDRM BRICK RANCHER w/2-CAR GARAGE * .47-AC. LOT
BEAUTIFUL RAISED PANEL CUSTOM KITCHEN * DAYLIGHT BASEMENT
ANTIQUES * FARM TOYS & METAL SIGNS * FURNITURE * TOOLS
SATURDAY, APRIL 10, 2021 @ 9-AM/Real Estate @ 1-PM**

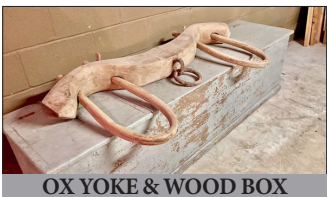
Located at 265 Stone Quarry Rd. Leola, Pa., W. Earl Twp., Lancaster Co.



DELAVAL SIGN



TOY TRUCKS & TRACTORS



OX YOKE & WOOD BOX



AMF PEDAL CAR



FARMERSVILLE FC QUILT

ANTIQUES & FURNITURE: Oak dining suite, ext table w/15-leaves, 10-chairs, buffet, server & hutch; chip carved roll-top secretary desk; china cupboard; 6-Ebersol chairs; 1927 Jonas M. Good grained chest; grandfathers clock; 1976 Farmersville Fire Co. appliquéd quilt; 3-pc dbl bed suite; Empire 4-drawer chest; corner cupboard; child's hutch; parlor table; Oak library table; roll-top desk; 2-recliners; 2-wood rockers; Glenwood Oak wood stove; 6-glass display cases; early step-back zinc dry-sink (NICE); Pine corner cupboard; AMF pedal car; pedal horse & cart; 2-Ford toy wagons; scooter; cast iron bulldogs, pointer dogs, fire wagon & horses; 2-egg scales; many metal advertising signs (DeLaval, Funk's Seed, etc), thermometers, clocks; old toy farm toys & trucks; train sets; early license plates; crocks, jugs, tins, oilers; local flour bags; 4-cleavers, meat hooks & grinders, sausage stuffer on bench; ox yoke (nice); cherry stoners; lanterns & miners lamps; Singer Jr. sewing machine; butter churn; coffee grinder; old wooden sleds/toboggan; sheep & steer skin buggy robes; train bell; NH foundry bell; gingerbread clock; large antique cast iron bull's head soap kettle; 4-copper kettles, copper tub, steamer & wash boiler; 2-straps sleigh bells; Pewter figurines; flow-blue pitcher & bowl set (nice); blue willow china; depression glass; 3-wooden ship models; early advertising calendars; NH leaded lamp shade; beam scales; sad irons; red wooden wheelbarrow; old mortised butcher block; mantle clocks, hurricane lamps; graniteware; etc.



GINGERBREAD CLOCK



ZINC LINED DRY SINK



METAL ADVERTISING SIGNS

PERSONAL PROPERTY: MTD 26" snow blower; 2800 PSI pressure washer; air compressor; many power drills & saws; axes, sledge, bench grinder; kero stove; metal & wood folding rules; battery charger; lawn, garden & garage items; lumber, plus much more not listed.

TERMS: Cash, PA check or (credit card w/3% admin fee); food by Farmersville Aux.; sale held under tent, bring your chair. All sale day announcements take precedence over prior ads.

Additional info on reverse side



AUCTION BY:
MARTIN & RUTT AUCTIONEERS
AY2189
Michael J. Martin (717) 371-3333
John J Rutt II (717) 587-8906



AUCTION FOR:
the David H. Good Estate
(Ed (717) 466-4993)
(Lewis (717) 371-2818)