



(Red Run & Pieffer Hill Area)



PUBLIC AUCTION

**2.2 ACRES * LARGE 2-STORY SANDSTONE HOUSE * 5-BR
CENTRAL A/C * OLDER FRAME BARN * GREAT LOCATION
HONDA CRV * ANTIQUES * TRACTOR * FURNITURE
SATURDAY AUG. 29, 2020 @ 9:00 AM * R.E. @ NOON**



2-LEVEL STONE HOUSE



HISTORIC SANDSTONE



OLDER FRAMED BARN



LARGE EAT-IN KITCHEN

Located at 870 Fivepointville Rd. Stevens Pa. 17578

DIRECTIONS: From Rt. 897 in Fivepointville, travel West on Fivepointville for 2 miles to property on right.

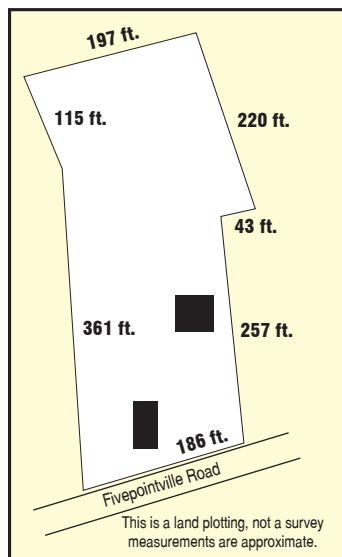
REAL ESTATE: A large 2-story Sandstone house w/ 5 bedrooms and older framed barn on 2.2 acre tract of land. This historic house has approx. 2,214 sq ft and was built in the 1800's and includes a oversized eat-in (remodeled) kitchen w/ huge stone fire-place, updated counter tops; large front living room; parlor room; main level bedroom; roomy full bathroom w/ tub shower; side mud room & laundry combination; 4 bedrooms upstairs & some closets; central A/C (2016); newer LP Gas heat in 2016 (1,000 gal. tank); on-site well; on-site septic system (2019); updated roof. Older framed barn w/ workshop area; double barns doors; elec. wired; older 1-car garage; beautiful backyard; wonderful farmland views; zoned Residential; Brecknock Twp.; Eastern Lanc. School District; total annual taxes \$3,716.

OPEN HOUSE: Saturdays, Aug. 15 & 22, from 1-3 PM. Call/Text auctioneer at 717-587-8906.

REAL ESTATE TERMS: 10% down day of auction, balance in 60 days. For complete terms please call Attorney Richard Young at 717-738-9000. This auction is held under the terms of the Attorney.

PERSONAL PROPERTY: Blue/Gray 2015 Honda CR-V w/ 63,000 miles VIN#5J6RM4H3XFLO45305, 4-WD, (very nice); 1941 John Deere model H Serial #28282 (needs restoration); John Deere Model H cultivator & plow parts; GE fridge w/ freezer bottom; electric stove; auto. washer & dryer; (4) Cherry plank seat chairs; George Zimmerman flat top desk; Mahogany china closet; drop leaf table; jelly cupboard; Victorian marble top table; sofa & chair; (2) bedroom suites; single bed; John Peters gun cabinet; Cub Cadet LT-1024 riding mower w/ 630 hrs.; work bench; bar clamps; old wood working tools; (2) old spring chairs; well pump; Bentz trough; picnic table; butcher tools; misc. frying pans; milk bottles; balance scales; carnival glass; everyday glassware, marble roller; several handmade quilts; Ertl John Deere tractors; matchbox toys; misc. toys; china chocolate set; oil lamps; old race track; children's books; misc. Christian books; dolls; misc. rough cut lumber;

Please visit our updated website at www.martinandrutt.com for pictures.



AUCTION BY:
MARTIN & RUTT AUCTIONEERS
AY2189
John J Rutt II (717) 587-8906
Michael J. Martin (717) 371-3333



AUCTION FOR:
JOHN & ARLENE PETERS ESTATE
Executor: Lynn R. Zimmerman
717-940-1144



(Red Run & Pieffer Hill Area)



PUBLIC AUCTION

**2.2 ACRES * LARGE 2-STORY SANDSTONE HOUSE * 5-BR
CENTRAL A/C * OLDER FRAME BARN * GREAT LOCATION
HONDA CRV * ANTIQUES * TRACTOR * FURNITURE
SATURDAY AUG. 29, 2020 @ 9:00 AM * R.E. @ NOON**



STONE FIREPLACE IN KITCHEN



SHOWS REAR ADDITION



JOHN DEERE MODEL "H"



CUB CADET MOWER



EAT-IN KITCHEN



UPSTAIRS BEDROOM



UP TO 5 BEDROOMS



KITCHEN REFRIGERATOR



ROOMY BACKYARD



2015 HONDA CR-V



CR-V MILEAGE



CHERRY BEDROOM SUITE

AUCTION BY:
MARTIN & RUTT AUCTIONEERS
AY2189
John J Rutt II (717) 587-8906
Michael J. Martin (717) 371-3333



AUCTION FOR:
JOHN & ARLENE PETERS ESTATE
Executor: Lynn R. Zimmerman
717-940-1144