



(New Holland Boro)



# PUBLIC AUCTION

**3-BDRM CUSTOM RANCHER w/2-CAR GARAGE \* .34-AC. LOT**  
**2-BATHS \* CUSTOM CABINETRY KITCHEN \* FINISHED BASEMENT**  
**TOOLS \* ANTIQUES \* FURNITURE \* PERSONAL PROPERTY**  
**SAT., OCTOBER 5, 2019 @ 9-AM/Real Estate @ 12 NOON**



1,424 SQ. FT. 3-BDRM RANCHER \* .34 AC.



CUSTOM RANCHER W/2-CAR GARAGE



18'X12' SCREENED PORCH & PATIO

Located at 234 Hawthorn St. New Holland, Pa.

**DIRECTIONS:** From Main St. (Rt.23 W.) at Orrstown Bank take Mentzer Ave. N. ¼ mile to right on Hawthorn St. cul-de-sac.

**REAL ESTATE:** consists of a one-owner custom built (1992)3-bdrm brick & vinyl 1,424 sq. ft. rancher on a .34-ac. corner lot. Main floor features a covered front porch; foyer, 13'x18' living room w/bay window & LP fireplace w/built-in cabinetry; raised panel custom oak cabinetry kitchen w/appliances; 10'x13' dining area w/patio doors to 18'x12' screened porch; laundry w/washer & dryer; attached 2-car garage w/shop area; full bath; 3-bedrooms; master w/private bath; lower level includes 702 sq. ft. finished family room w/LP stove; Bilco exit door; Superior walls; utility room w/central AC/heat pump; public water & sewer; annual taxes approx. \$3,200. 12'x10' garden shed.

**OPEN HOUSE: SAT. SEPT. 14 & 21 from 1-3 PM for info call auctioneer @ (717) 371-3333**

**TERMS:** 10% down day of sale, balance on or before 60-days. Attorney: Kling & Deibler (717) 354-7700.

**NOTE:** Beautiful custom rancher located on quiet cul-de-sac. Home features many valuable amenities including open floor plan, screened porch & finished basement family room; low maintenance brick & vinyl home, level corner lot & wide macadam drive.

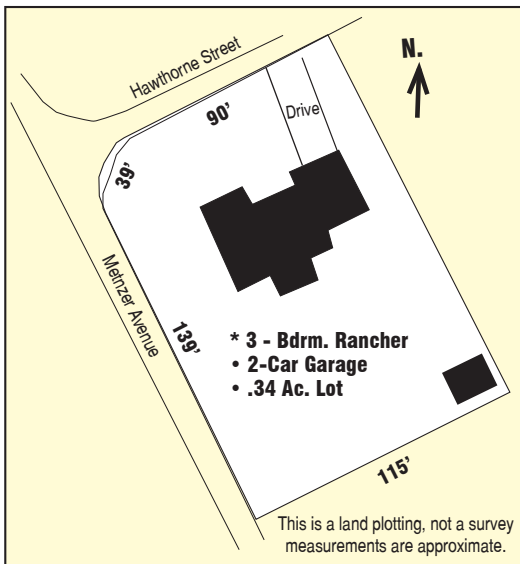
For photos & listing visit [www.martinandrutt.com](http://www.martinandrutt.com)

**Lawn, Garden & Tools:** Snow Chief 8hp 25" snow blower; string trimmer; edger; leaf blower; organizers; space heater; ext. cords; tool boxes; B & D bench grinder; wheelbarrow; LP & charcoal grills; step ladders; bench vise; shovels, brooms, rakes; power saws & drills; lots of hand tools; ladder golf; lawn chairs; galvanized water can; saw bucks; etc.

**Furniture & Antiques:** Cherry china hutch; 2-wing chairs; lighted curio cabinet; early Seth Thomas & Sessions mantle clocks; sofa & chair set; picnic table & patio chairs; wash stand; framed mirror; 2-blanket chests; 3-4-drawer chests; 4-pc dbl bdrm suite & bedding; painted chairs; glass front bookcase; Winross display case; drop-leaf table; end tables & lamps; oak TV stand; painted milk can; etc.

**Personal Property:** Quilts, blankets & wall hangings; 300+ S & P sets; 25-Winross, Penjoy & Ertl trucks; 15-Hess trucks; toy truck banks; Ertl Case Millennium steam traction engine; 36+ glass baskets; fine china set; Carnival & pink Depression glass; nice SS stock pots; electric ice cream freezer; graniteware bowls, buckets canners & roasters; canning jars; McCoy planters; early oil lamps; numerous home décor items; puzzles & games; nice framed puzzles; plus much more!

**Terms:** cash; PA check or credit card w/3% fee. Food stand provided; auction held under tent, bring a chair. All sale day announcements take precedence over prior ads.



CUSTOM OAK KITCHEN



DINING AREA & CABINETS



EARLY SESSIONS CLOCK



CEDAR CHEST & QUILTS

**AUCTION BY:**  
**MARTIN & RUTT AUCTIONEERS**  
 AY2189  
 Michael J. Martin (717) 371-3333  
 John J. Rutt II (717) 587-8906



**AUCTION FOR:**  
**RALPH L. AUER**