



(Berks Co/Oley Valley Area)



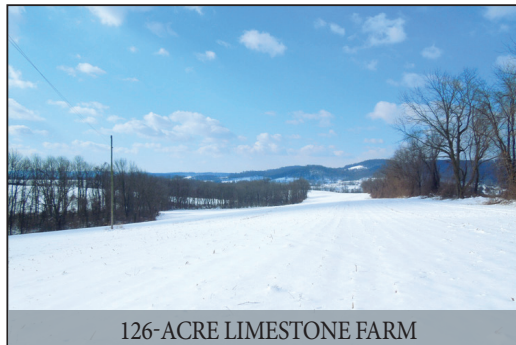
PUBLIC AUCTION

126-ACRE HIGHLY PRODUCTIVE LIMESTONE SOIL FARM

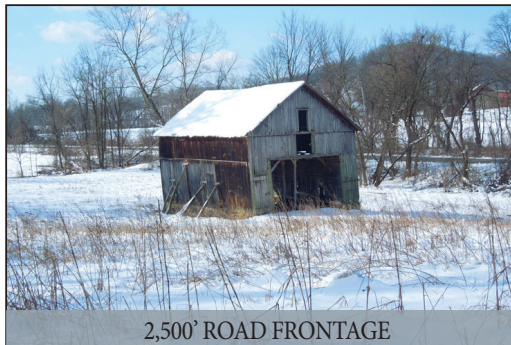
80-ACRES TILLABLE * 46-ACRES WOODED w/STREAM

IMMEDIATE TILLAGE RIGHTS GRANTED!

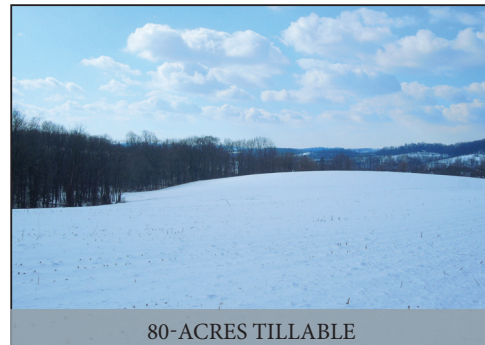
FRIDAY, MAY 3, 2019 @ 1-PM



126-ACRE LIMESTONE FARM



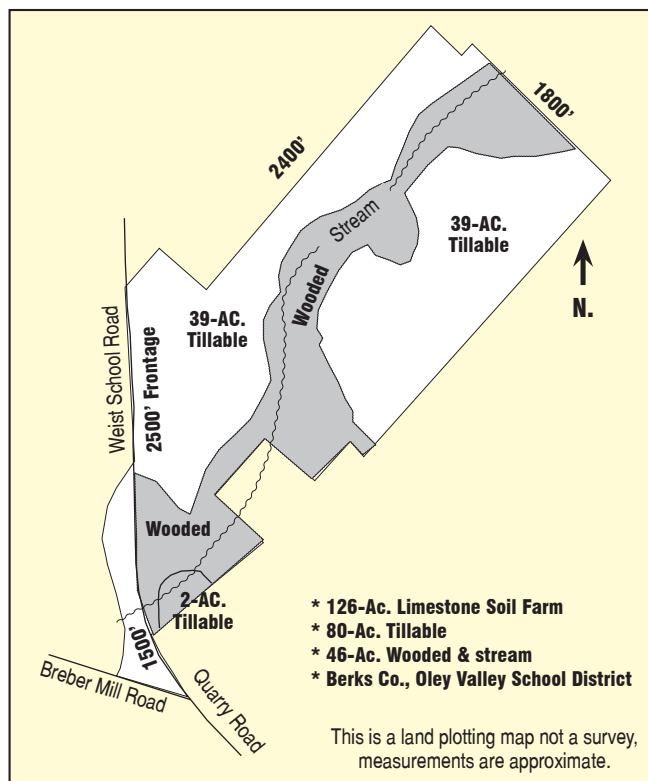
2,500' ROAD FRONTAGE



80-ACRES TILLABLE

Located at: Weist School & Quarry Rd, Oley, Pa. Oley Twp. Berks, Co.

DIRECTIONS: From Oley, Pa. take Memorial Hwy. (Rt. 662 S.) 1-mi. to right on Oley Turnpike Rd. ½ mi. to right on Bieber Mill Rd. to farm-land on right.



REAL ESTATE: consists of **126-acres** with approx. 80-acres tillable & 46-acres wooded w/ stream. Berks Co. property ID #6753480021250 Farm offers deep to moderately deep well-drained Duffield-Washington limestone based undulating soils; topography is sloping to gently rolling. Farm has been kept in a high state of cultivation and fertilization w/highly productive yields. Property is not enrolled in either Clean & Green or Farmland preservation programs; current zoning is industrial; nearly 2,500' frontage along Quarry & Weist School Rd. **Outbuildings:** include a 24'x36' corn crib/ tractor shed & 2-stone springhouses. Woodland & stream offers excellent private deer hunting locations!

OPEN HOUSE INSPECTION: Property may be inspected anytime at your convenience. For info please contact auctioneer @ (717) 371-3333.

TERMS: 10% down day of sale, balance on or before 60-days. **Successful buyer will be granted immediate tillage rights!**

Attorney: Catherine E. N. Durso (610) 797-9000

NOTE: Valuable highly productive farmland w/numerous possibilities; bring creative plans for your own custom farmstead! Lots of road frontage, electric available; desirable Oley Valley School District.

**** BROKER PARTICIPATION INVITED ***

**** Contact Auctioneer (717) 371-3333 ****

For photos & listing visit www.martinandrutt.com

AUCTION BY:
MARTIN & RUTT AUCTIONEERS
AY2189
Michael J. Martin (717) 371-3333
John J. Rutt II (717) 587-8906



AUCTION FOR:
NEW ENTERPRISE STONE & LIME CO., INC.