



(Mohnton/Sinking Spring Area)



# PUBLIC AUCTION

**16.69 AC. FARM w/1,800's 4-BR STONE FARMHOUSE \* SUMMER HOUSE  
2-SPRING HOUSES & POND \* 40'x80' 2-STORY FRAME BANK BARN  
CASE IH 35A 4WD TRACTOR (100hrs) \* CASE 1845C SKIDLOADER \* '78-JEEP J10  
VALUABLE ANTIQUES \* FURNITURE \* GLASSWARE \* STERLING SILVER  
SATURDAY, APRIL 27, 2019 @ 9-AM/Real Estate @ 1-PM**



40' X 80' 2-STORY BANK BARN



4-BR 1,800'S STONE FARMHOUSE



16.69 AC. FARM; 8+AC. TILLABLE

Located at 231 Wheatfield Rd. Sinking Spring, Pa. Spring Twp. Berks Co.

**DIRECTIONS:** From Ephrata, Pa. take Rt. 222 N. to Mohnton exit left on Grings Hill Rd. ¼ mile to left on Wheatfield Rd. to farm on right.

**REAL ESTATE:** consists of a 16.69 acre farm w/an 1800's stone farmhouse; summer house; 2-springhouses & large bank barn. 1800's stone house: 1st floor features a custom raised panel cherry kitchen w/SS fridge, DW & range; dining area; walk-in FP; exposed beams; cold cellar; laundry; ½ bath; utility room; 2nd floor features a formal living room w/FP; family room/BR; random-width softwood flooring; full bath; 3rd floor includes 4-bdrms & full bath; electric heat. New roof; on-site well, public sewer; oil HW heat; annual taxes: \$3,900 enrolled in Clean & Green. **Outbuildings:** a 40'x80' frame bank barn w/stables & storage; milk house; 2-spring houses & pond.

**OPEN HOUSE: SAT. APRIL 6 & 13 from 1-3 pm, for info call auctioneer @ (717) 371-3333**

**TERMS:** 10% down day of sale, balance on or before 60 days. **Attorney:** Kling & Deibler (717) 354-7700.



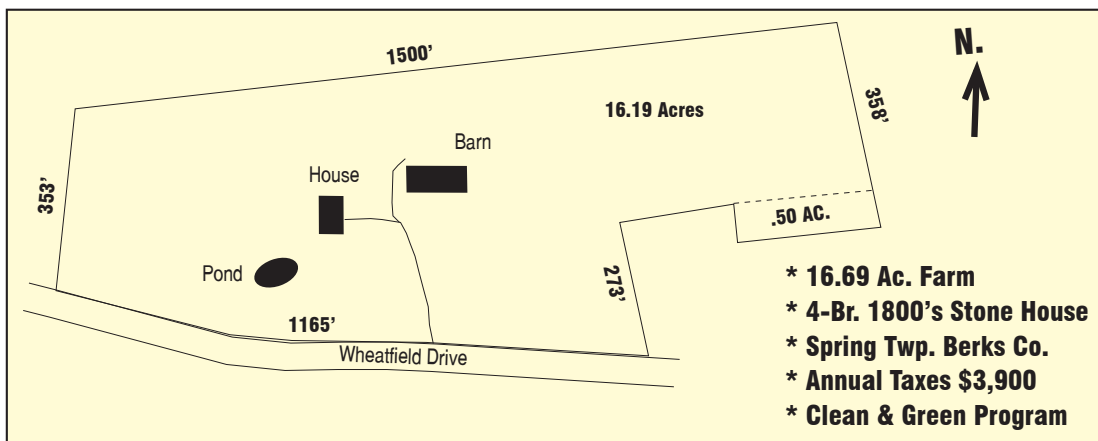
CUSTOM CHERRY KITCHEN



WALK-IN SIZE FIREPLACE!

**NOTE:** Outstanding historic Berks Co. farm, rich character throughout; large bank barn; horses ok; 4-ac. wooded; 8+ac. tillable great produce or hobby farm; conveniently located 1-mi. from Rt. 222.

**For photos & listing visit  
[www.martinandrutt.com](http://www.martinandrutt.com)**



**AUCTION BY:**  
**MARTIN & RUTT AUCTIONEERS**  
AY2189  
Michael J. Martin (717) 371-3333  
John J. Rutt II (717) 587-8906



**AUCTION FOR:**  
**JANET H. FISHER**  
(Jay 610 413-4659)





(Mohnton/Sinking Spring Area)

# PUBLIC AUCTION



**16.69 AC. FARM w/1,800's 4-BR STONE FARMHOUSE \* SUMMER HOUSE  
2-SPRING HOUSES & POND \* 40'x80' 2-STORY FRAME BANK BARN  
CASE IH 35A 4WD TRACTOR (100hrs) \* CASE 1845C SKIDLOADER \* '78-JEEP J10  
VALUABLE ANTIQUES \* FURNITURE \* GLASSWARE \* STERLING SILVER  
SATURDAY, APRIL 27, 2019 @ 9-AM/Real Estate @ 1-PM**

Located at 231 Wheatfield Rd. Sinking Spring, Pa. Spring Twp. Berks Co.

**DIRECTIONS:** From Ephrata, Pa. take Rt. 222 N. to Mohnton exit left on Grings Hill Rd. ¼ mile to left on Wheatfield Rd. to farm on right.

**FARM ITEMS/TOOLS:** CASE IH Farmall 35A 4WD tractor (102 hrs) LIKE NEW! Woods PRD 6000 3-pt. PTO 60" brush mower; Woods 48" BrushBull 3-pt. PTO mower; MTD 25-ton log splitter; 5' 3-pt landscaper stone rake; CASE 1845C DSL hydro Skidloader w/ quick-attach tooth bucket (2700 hrs); Tomahawk grapple bucket, hydraulic tree puller both quick-attach; 1978 JEEP J10 runs, as-is, 58k miles; 25-gal orchard sprayer on cart; Craftsman 180 amp welder; welding table; Stihl 14" chainsaw; bench vises; Stanley planes; spoke knives; old hand planter & cultivator; hog trough; chicken feeder; string trimmer; lots of metal shelving; hardware; **Machinist Tools:** drill bits, reamers, milling machine cutters; tap & die sets; carbide lathe cutters; jigs & fixtures; levels; T-squares; hand & bow saws; many hand & power tools; barn jacks; traps; many old wood panel doors, shutters, sash windows; ladders; wooden boxes & soda crates; old barn beams; galvanizes water cans; Wheeling tubs & stands; old wooden (Christmas Tree) signs; **4' SANDSTONE TROUGH (cracked);**

**ANTIQUES & FURNITURE:** 100's Sterling silvers spoons, candlesticks & bowls; Spode china Mayflower pattern; Carnival glass; Depression glass in green, blue, pink & amber; vintage Christmas items; cast iron animals, doorstops & toys; cookie cutters; Walnut wall clock; Gingerbread mantle clock; large brass dovetailed apple-butter kettle; 3-footed kettle; kettle on trivet stand; cast iron tea pots; sad irons; rat-tailed iron utensils; pocket knives; jewelry; glass bell banks; straight razors, spectacles; tobacco tins; war rations, military badges, pins, medals, books & literature; chalkware figures, toys, animals; 100's old postcards; stamps; Baer's Almanacs, Lancaster PA.; fancy old valentines; local advertising items; stereoscopes & cards; Native American books, Pow-Wows, arrowheads, etc.; many vintage dolls, jointed, bisque, cloth, black, etc.; early quilts, textiles & rugs; marbles & games; beaded purses (NICE!); pocket watches; ladies handkerchiefs; jewelry boxes; dresser sets, hat pins; pin cushions; papier-mâché cat; Sinking Spring, Cacoosing, A.T. Sheidy dairy bottles; Copper Lustre items; teacup collection; brass buckets, teapots & trivets; many old stoneware crocks & jugs; oil lamps; cobalt blue salts & eye cups; rare flow-blue items; Roseville, Hall, McCoy pottery; Meiser book set; lots of Berks Co./Reading history books & literature; old deeds; egg scales; wooden dry measures; brass spring scales; Reading beer trays & sign; vintage baskets; Toleware tray; Walnut frames; ironstone dinnerware, pitchers & tureens; bird cage, green jars, Disney toys; coffee grinders; Enterprise sausage stuffer; wood tine rakes; etc. **FURNITURE:** 12-pane walnut corner cupboard; 4-pc single BR suite; oak child's slant desk; glass door bookcase; 7' walnut farm table & 6-chairs; green painted rocker; drysink; Necchi sewing machine & cabinet; Duncan Phyfe settee; 5-painted chairs; spool-leg fern stands; old grain-painted base cabinet; black bear rug; etc.

**TERMS:** Cash, PA check & credit cards w/3% fee; food available; sale held in tent, bring a chair; large auction, selling with 2-auctioneers all day! All sale day announcements take precedence over prior ads.

For photos & listing visit [www.martinandrutt.com](http://www.martinandrutt.com)



LOTS OF STERLING SILVER



LARGE BRASS KETTLE



QUILTS & TEXTILES



OLD POCKET WATCHES



RARE FLOW-BLUE CHINA



CASE IH 35A 4WD TRACTOR



CASE 1845C SKIDLOADER



SANDSTONE WATER TROUGH



WOODS BRUSH BULL 48" MOWER



25-TON LOG-SPLITTER (2-YRS)

**AUCTION BY:**  
**MARTIN & RUTT AUCTIONEERS**  
AY2189  
Michael J. Martin (717) 371-3333  
John J. Rutt II (717) 587-8906



**AUCTION FOR:**  
**JANET H. FISHER**  
(Jay 610 413-4659)