



(Ephrata Area)



PUBLIC AUCTION

**FORD MODEL-A * JD BACK-HOE * VIKING CAMPER
TOOLS * 4-WHEELERS * GUNS * MINI-BULLDOZER**
SATURDAY OCT. 20, 2018 @ 8:30 AM



1930 FORD MODEL-A



JOHN DEERE 2440



HORSE-LESS CARRIAGE



CUSTOM 4x4 MINI-PAN

Located at: 551 Stevens Rd. Ephrata Pa 17522

DIRECTIONS: From Rt. 322 & Rt. 272 intersection in Ephrata, travel West on Rt. 322 and turn right at first traffic light (Academy Dr.) Follow main road .6 of mile to property on right.

EQUIPMENT & TOOLS: 1930 Ford model-A Roadster w/ rumble seat & trunk (beautiful restoration, very nice); John Deere model 2440 tractor w/ high/low trans; John Deere model 410-B backhoe w/ cab heat (4,200 hrs); (3) John Deere backhoe buckets 12", 15", & 24"; custom built Horse-Less Carriage w/ Honda engine; Cat. Mini bulldozer w/ Honda engine; custom built mini scraper pan w/ 4x4 & 2 engines (runs perfect); 2015 17' Viking Camper trailer w/ A/C, kitchen, & bathroom (like new); Ferris IS-2100Z zero-turn mower, 268 hrs (like new); 2002 Polaris 400 Sportsman 4x4 4-wheeler; 1987 Honda 400 Fourtrax Foreman 4x4 4-wheeler; 1970's Honda #70 trail bike; 3 pt. scraper blade; 3 pt. potato plow; Ariens roto-tiller; (3) trash pumps w/ Honda engine; stationary fuel pump; Dayton 3500 watt generator; Lincoln gas powered stick welder/generator; Trac-Vac leaf trailer vacuum; SK 7/8" - 2 1/4" socket set; SK 5/8" - 1 1/4" socket set; SK 3/8" drive socket set; 1 1/4" - 2" set open end wrenches; Hanson tap/die set; Mil. Saw-zall; Makita tools; table saw; 70K reddy-heater; 1/2" & 3/4" air impact drivers; (2) 200' tape measures; work light; Handy-Man jack; (4) bottle jacks; Blue tarps; 2-ton hoist & stand; 25 gal. sprayer; elec. motors; banding machine w/ cart & tools; 30-ton bearing press; Craftsman 60 amp. battery charger; Acetylene torch & tank; small LP heater; misc. hand tools; misc. elec. wire; plus much more unlisted.

TERMS: Paid in full day of auction w/ Cash, good PA Check or Visa/Master Card w/ 3% fee.

For photos & listing visit www.martinandrutt.com

**Additional info on
reverse side**



AUCTION BY:
MARTIN & RUTT AUCTIONEERS
AY2189
John J Rutt II (717) 587-8906
Michael J. Martin (717) 371-3333



AUCTION FOR:
ELMER & ELLEN MARTIN



FERRIS IS-2100Z MOWER



CUSTOM MINI DOZER



JD 410-B BACK-HOE



HONDA #70 TRAILBIKE



HONDA FOREMAN 4 x 4



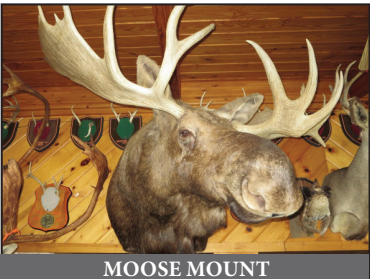
LOTS OF QUALITY TOOLS



2015 VIKING 17' CAMPER



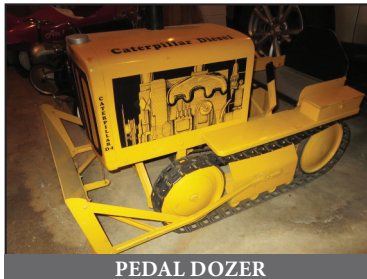
NICE GUNS



MOOSE MOUNT



SEVERAL PEDAL TRACTORS



PEDAL DOZER



NICE SK TOOLS

GUNS & PERSONAL PROPERTY: Weatherby 300 Winchester Mag. rifle w/ 3x10 scope & SS barrel; Marlin #882 .22 rifle w/ SS barrel; Stevens #77 12 ga. pump w/ silencer; J. Stevens .32 rifle w/ hex barrel; Winchester #69A .22 bolt ac. Rifle; Remington #870 12 ga shotgun & extra slug barrel; Thompson Center .50 cal. flintlock rifle; Crescent 12 ga. double barrel shotgun; H & R #929 double barrel; Savage model I .22 bolt ac. rifle; Marlin .22 bolt ac. rifle; Enforcer fireproof digital gun safe; beautiful Moose shoulder mount; Elk shoulder mount; misc. Whitetail mounts; Black Bear shoulder mount; deer cart; (45) foot & body traps; (2) 1-person kayaks & ors; Rattan glass-top table & 4 chairs; Starburst queen size hand-made quilt; Dresden Plate quilt top; Caterpillar pedal bulldozer on tracks; old A/C D-14 pedal tractor; Yellow John Deere Indus. Pedal tractor (Ertl); old Power-Trac tin pedal tractor; (2) LP patio heaters; LP patio firepit; air tire wagon; Air Knight pedal airplane; old church bench; Tinker toys; Fisher-Price toys; Uncle Arthur's book series; Brass bulldog doorstop; old tin child's steam shovel; balance scales; old glass fly trap; old glassware; collectibles; old watering can; large pile of split firewood; chicken crate; plus much more unlisted. Please bring a chair.

TERMS: Paid in full day of auction w/ Cash, good PA Check or Visa/Master Card w/ 3% fee.

For photos & listing visit www.martinandrutt.com

Additional info on
reverse side



AUCTION BY:
MARTIN & RUTT AUCTIONEERS
AY2189
John J Rutt II (717) 587-8906
Michael J. Martin (717) 371-3333



AUCTION FOR:
ELMER & ELLEN MARTIN