



(Quentin & Fontana Leb. Co. Area)



HYBRID PUBLIC AUCTION

AFFORDABLE * 1.8-ACRE VACANT CORNER LOT HIGH TRAFFIC INTERSECTION & TRAFFIC LIGHT

THURSDAY APRIL 18, 2024 @ 6:00 PM



1.56 CORNER LOT AT A TRAFFIC LIGHT

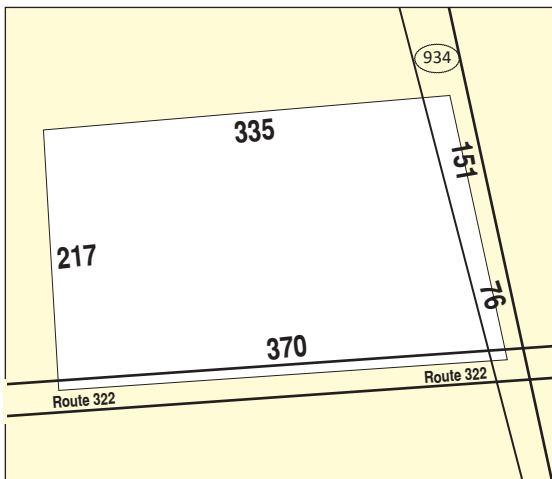
Located at 721 Horseshoe Pike, Annville PA 17003 * South Lebanon Twp.

DIRECTIONS: Situated on the NW corner of Rt. 322 & Rt. 934 intersection, west of Quentin.

REAL ESTATE DETAILS: Parcel # 29-2321083-349293-0000 A very visible 1.8-acre corner vacant lot. This desirable property has level/gentle slope; Penn-Dot shows a traffic count of 16,000 on Rt. 322 & 7,600 on Rt. 934 (vehicles per day); currently zoned Agriculture; many possible uses; the future is very bright for this tract of land; total taxes only approx. \$1,182. If you have zoning questions, please call the County Planning Department 717-228-4444.

OPEN HOUSE DATES: Please walk the property and examine at your convenience during daylight hours. Auctioneer 717-587-8906

BRIEF TERMS: \$8,000 down payment the day of auction, balance in 45-days or before. This auction is held under the terms provided by Attorney Tony Schimaneck 717-299-5251.



Please visit our website at www.martinandrutt.com or Facebook or Instagram

OFFERING BROKER PARTICIPATION, AGENTS NEED TO REGISTER
ON-LINE BIDDING AVAILABLE



SCAN TO VIEW

AUCTION BY:
MARTIN & RUTT AUCTIONEERS
John J Rutt II (717) 587-8906
Michael J. Martin (717) 371-3333
Cameron Rutt



AUCTION FOR:
BRIAN & IRENE WITMER