



(New Holland Area)



PUBLIC AUCTION

3-BDRM 1.5 BATH 2-STORY BRICK HOME * .51-AC. LOT DETACHED 3-CAR GARAGE * CUSTOM MAPLE KITCHEN THURSDAY, SEPTEMBER 21, 2023 @ 6:30 PM



1,946 SQ. FT. 2-STORY BRICK HOME



3-BDRM 1.5-BATH HOME * .51-AC. LOT

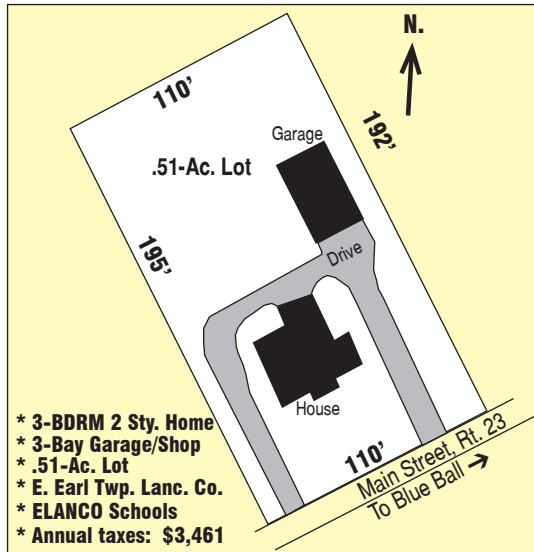


GOURMET CUSTOM KITCHEN

Located at 969 E. Main St. New Holland, Pa. E. Earl Twp. Lancaster Co.

DIRECTIONS: From New Holland Yoder's Market Complex follow Rt. 23 E. ½ mile to home on left.

REAL ESTATE: Consists of 1,946 sq. ft. brick 2-story 3-bedroom home; detached 3-bay garage on a level .51-ac. lot. Main floor features a stunning gourmet 30-handle Maple cabinetry kitchen w/granite countertops & tile backsplash, glass top stove, DW, island work station, SS fridge, SS double wall oven & pantry; mudroom/laundry w/stacking washer & dryer included, Maple cabinetry & sink, window seat; powder room; 16'x12' formal dining room w/HW flooring, wainscoting, built-in corner cupboard, crown molding & recessed lighting; 14'x21' formal living room & foyer; 6'x7' covered front porch; open staircase; 16'x10' office/den; 10'x13' enclosed side porch/storage room; upper level has 3-bedrooms w/closets; primary BR has WIC; NEW full bath (2023); 12'x12' private covered balcony; walk-up attic storage; basement includes a 14'x18' family room; utility room w/walk-out access; central AC; oil furnace HW heat w/1000 gallon fuel tank; insulated windows & doors; newer shingle roof; public water & sewer; annual taxes: \$3,461. **Outbuilding:** a 958 sq. ft. frame & brick 3-bay garage/shop; paved circle driveway; large level backyard w/lots of room for garden, etc.



SS APPLIANCES INCLUDED



FORMAL DINING ROOM



SPACIOUS LIVING ROOM



3-BAY GARAGE/SHOP

OPEN HOUSE: SAT. SEPT. 2 & 9 from 1-3 PM for info call/text auctioneer @ (717) 371-3333.

TERMS: 10% down day of sale, balance in 60-days. Attorney: Kling, Deibler & Glick (717) 354-7700

Note: Beautiful updated brick 2-story w/outstanding gourmet kitchen, crown molding, recessed lighting, rich character & tasteful décor throughout! Circle driveway, large level backyard, nice mature shade. ELANCO Schools; ideally located close to all conveniences!

FOR PHOTOS & COMPLETE LISTING VISIT www.martinandrutt.com

AUCTION BY:
MARTIN & RUTT AUCTIONEERS
AY2189
Michael J. Martin (717) 371-3333
John J Rutt II (717) 587-8906



AUCTION FOR:
DAVID A. WANNER