



(Intercourse Area)

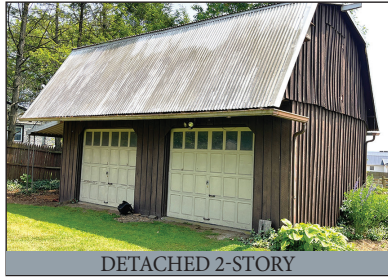


# PUBLIC AUCTION

**.87-ACRE LEVEL LOT \* 3-BR RANCHER \* NICE YARD  
DETACHED BARN \* ATTACHED 3-CAR GARAGE \* CORNER LOT  
MOTORCYCLES \* GARAGE ITEMS \* TOOLS \* ANTIQUES  
SATURDAY, JULY 29, 2023 @ 8:30 AM \* R.E. @ 1:00 PM**



3-BR & 3-CAR GARAGE



DETACHED 2-STORY



LAND PLOTTING



OLD PEDAL TRACTOR

**Located at 3738 E. Newport Rd. Gordonville Pa. 17529**

**DIRECTIONS:** From the town of Intercourse on Rt. 340, turn South on Rt. 772, go .3 mile to property on right.

**REAL ESTATE LISTING:** A clean 2,066 sq. ft. Ranch style house w/ 3 bedrooms, 3-car attached garage, detached barn on level .87-acre lot. House was built in 1958 and has a spacious eat-in kitchen w/ abundant wooden cabinetry; front family room w/ corner window; 3 bedrooms w/ closets; full bathroom; rear sunroom; large recreation room (old 1-bay garage); storage room; oversized 3-bay attached garage w/ work area; large basement recreation room & utility room; full steps to second level storage. House has public water & sewer; oil-fired radiator heat.

**DETACHED GARAGE:** A wood framed 2-story detached 2-car garage has 2-overhead doors, work area, full steps to second level storage. Leacock township, Pequea Valley School District; zoned Residential; total taxes approx. \$4,793.

**OPEN HOUSE DATES:** Saturdays, July 15 & 22, from 1-3 PM. Call/Text Auctioneer 717-587-8906.

**BRIEF TERMS:** 10% down the day of auction, balance in 60 days or before. This auction is held under the terms provided by Attorney Kling, Deibler & Glick 717-354-7700.

**GARAGE ITEMS & TOOLS:** 1971 Honda 70cc SL70 mini-cycle; 1973 Honda 70cc XL70 mini-cycle; 1981 Honda Gold Wing (interstate package), 1100cc motorcycle; 1982 Honda v45Magna 750cc motorcycle; Speedwall airless spray gun 350SE \*brand new; Ariens model zoom1640 zero-turn mower w/ bagger; I.H. 3-hp hit-n-miss engine #W26925; Maytag hit-n-miss engine; several old small engines; GM 350 V-8 engine only; Makita 3500 watt generator; (2) battery chargers; Horse size Troy-Bilt tiller; International Farmall 856 pedal tractor; Clinton 1-wheel cultivator (1940s); Jonsered CS-2240 chainsaw (nice); Tanaka straight shaft trimmer; (5) 1950's boat motors; Speedaire 10.3CFM air compressor; MTD 10-hp snowblower; Tanaka 2" trash pump & hose; harbor freight 110-lb anvil; Blue-Ox tow bar (car); Gil-craft table saw; red snowplow for Amigo tractor; garden dump cart; (2) Craftsman wood chippers; 1980s BMX bike; WW-2 Blue bike; 16" scroll saw; Rockwell rotary planer; wooden wheel barrow wheel; jack stands; saw blades; bench grinder; drill bit sharpener; Conestoga 6" joiner; poly garden box; (4) wooden step ladders; storage lockers; various hand tools; vintage chevy hubcaps; palm sanders; bar clamps; antique floor sanders; "Silver Beauty" small mig welder; sand blaster; his/hers red Murray bikes; small tools; new duel cylinder 5-hp air compressor (pump only); plus unlisted items

**PERSONAL PROPERTY:** 1840s dry-sink; Oak Hoosier style kitchen cabinet; Sensenich wooden propeller; maple 2pc hutch; Kimball piano; small rattan shelf; end tables; antique dropleaf table; games; old toys; immigration chest; everyday dishes; attic items being unpacked, come and see

Please visit our website @ [www.martinandrutt.com](http://www.martinandrutt.com) or Facebook or Instagram



SCAN TO VIEW

**AUCTION BY:**  
**MARTIN & RUTT AUCTIONEERS**  
AY2189  
John J Rutt II (717) 587-8906  
Michael J. Martin (717) 371-3333



**AUCTION FOR:**  
**FRANK H. & JUNE R. HOOVER**