



(Hinkletown Area)



# PUBLIC AUCTION

**LARGE BRICK 2 UNIT HOUSE \* DETACHED GARAGE**  
**.90 ACRE \* SEPARATE UTILITIES \* GREAT RENTAL**  
**TUESDAY, JUNE 26, 2018 @ 7:00 PM**



2 UNIT, SIDE-BY-SIDE



DETACHED GARAGE

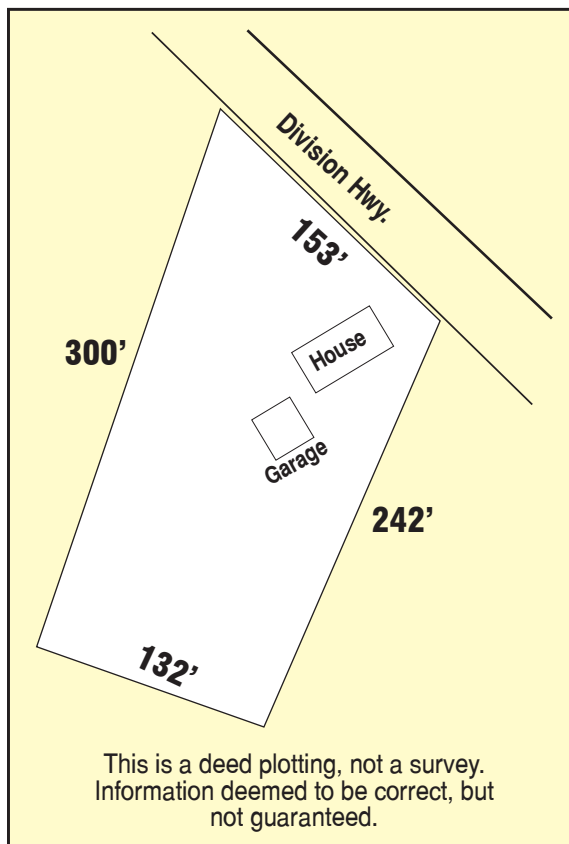


EACH HAS 3 BEDROOMS

**Located at: 1849 Division Hwy. New Holland Pa 17557**

**DIRECTIONS:** From 322 in Ephrata, travel East on Rt. 322 though Hinkletown to property on right.

**REAL ESTATE:** A large 2 story Brick house w/ side-by-side residential apartments on .90 acre lot. The apartments mirror each other. They both have eat-in kitchens w/ wooden cabinetry; family room; living room; nice org. wooden banisters to second level has 3 large bedrooms w/ closets; full bathroom; attic storage; 2 sets of laundry hook-ups in basement; large covered front porch; 2 updated oil fired H/W radiator furnaces; separate elec. meters; on-site well & septic; Earl Twp.; detached 2 car brick garage; large backyard; reasonable total taxes approx. \$2,894.00.



**AUCTIONEER NOTE:** This is a wonderful income producing property. Owners could live in 1 side and rent the other out, or rent them both out for max income. Low maintenance inside & out, come prepared to buy because we plan to say sold.

**OPEN HOUSE DATES:** Saturday, June 16 from 1-3 PM. Call/Text auctioneer for additional information at 717-587-8906.

**BRIEF TERMS:** 10% deposit day of auction, balance in 45 days or before. For complete terms please call Attorney Kling & Deibler at 717-354-7700. This information has been provided as a courtesy to the buyer and is believed to be true/accurate, however buyer is responsible to verify any/all information. Auction is held according to Attorneys terms & conditions.

**For photos & listing visit [www.martinandrutt.com](http://www.martinandrutt.com)**  
**FREE REFRESHMENTS AT OUR AUCTION**

**AUCTION BY:**  
**MARTIN & RUTT AUCTIONEERS**  
 AY2189  
 John J Rutt II (717) 587-8906  
 Michael J. Martin (717) 371-3333



**AUCTION FOR:**  
**MELVIN & MIRIAM NOLT**